

ACCEPTED
FOR REGISTRATION

April 11, 2017

New York State Department
of Environmental Conservation
Division of Materials Management
Pesticide Product Registration



Milky Spore P O W D E R JAPANESE BEETLE CONTROL



READY TO USE

ACTIVE INGREDIENT:	w/w
Spores of <i>Bacillus popilliae</i> *	0.02%
OTHER INGREDIENTS:	99.98%
Total	100.00%

*Equivalent to 1x10⁸ *Bacillus popilliae* spores/g.

See other panels (or product insert) for precautionary statements,
first aid, and directions for use.

KEEP OUT OF REACH OF CHILDREN
CAUTION

NET WT. 10 OZ. – TREATS 2,500 SQ. FT. BY SPOT APPLICATION

EPA REG. NO. 63191-I EPA EST. NO. 63191-VA-I

Milky Spore

Use Milky Spore to Kill Japanese Beetle Grubs

Japanese Beetle Larvae live in the soil feeding on tender grass roots.

1,000 Adult Beetle lay 50,000 Grubs each year.

Rid Your Lawn Of Unsightly Brown Spots

DIRECTIONS FOR USE:

It is a violation of Federal law to use this product in a manner inconsistent with its labeling.

SHAKE PRODUCT TO FLUFF POWDER BEFORE USING.

Powder tends to settle during shipment.

FOR USE ON LAWNS AND GRASSY AREAS, ORNAMENTAL GARDENS AND FLOWER BEDS, MULCHED BEDS AND GROUND COVER BEDS:

To control Japanese beetle grubs in lawns and these other areas, apply one level measuring teaspoon of MILKY SPORE powder on top of grass or on the ground between plants, in spots every four feet along rows four feet apart. Use 10 oz. to treat 2,500 sq. ft., 1 pound for 4,000 sq. ft., 2.5 lbs for 10,000 sq. ft., or ten pounds of MILKY SPORE powder per acre of lawn.

MILKY SPORE can also be applied with the Milky Spore Dispenser Tube. Directions are included with the dispenser.

Treat your lawn or other areas specified on this label during any season of the year when the ground is not frozen and water lightly after application to soak spores into the soil.

Areas between treated spots will be inoculated naturally. Uniform, highly efficient control cannot be expected until the entire area has been inoculated.

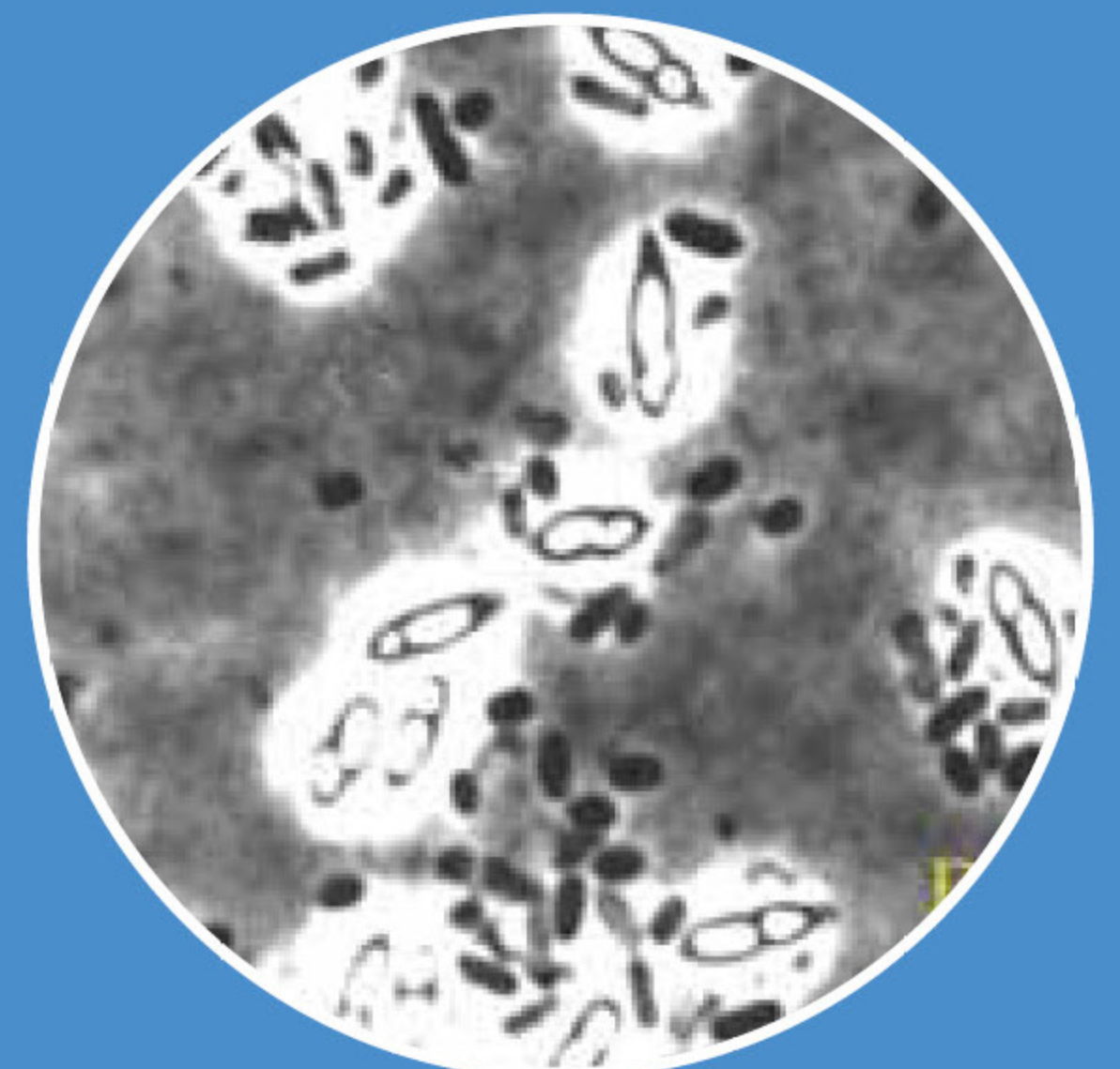
TEN YEAR GUARANTEE ON THIS PRODUCT WHEN APPLIED AS DIRECTED



Adult Beetle



Healthy Grub



Magnified Spores



Grub infected with Milky Spore

Milky Spore

Use Milky Spore to Kill Japanese Beetle Grubs

PRECAUTIONARY STATEMENTS:

Hazards to Humans and Domestic Animals:

CAUTION: Harmful if inhaled or absorbed through skin. Causes moderate eye irritation. Avoid breathing dust. Avoid contact with skin, eyes or clothing. Wash thoroughly with soap and water after handling and before eating, drinking, chewing gum, using tobacco or using the toilet. Remove and wash contaminated clothing before reuse.

ENVIRONMENTAL HAZARDS:

To protect the environment, do not allow pesticide to enter or run off into storm drains, drainage ditches, gutters or surface waters. Applying this product in calm weather when heavy rain is not predicted for the next 24 hours will help to ensure that wind or rain does not blow or wash pesticide off the treatment area. Sweeping any product that lands on a driveway, sidewalk, or street, back onto the treated area of the lawn or garden, will help prevent run off to water bodies or drainage systems.

FIRST AID:	
IF INHALED:	Move person to fresh air. If person is not breathing, call 911 or an ambulance, then give artificial respiration, preferably mouth-to-mouth if possible. Call a poison control center or doctor for treatment advice.
IF ON SKIN OR CLOTHING:	Take off contaminated clothing. Rinse skin immediately with plenty of water for 15-20 minutes. Call a poison control center or doctor for treatment advice.
IF IN EYES:	Hold eyelids open and rinse slowly and gently with water for 15-20 minutes. Remove contact lenses, if present, after the first 5 minutes, then continue rinsing eye(s).

STORAGE AND DISPOSAL:

Do not contaminate water, food, or feed by storage or disposal.

PESTICIDE STORAGE:

Store in a cool, dry place away from direct sunlight. Keep container tightly closed to protect product from moisture.

PESTICIDE DISPOSAL AND CONTAINER HANDLING:

Nonrefillable container. Do not reuse or refill container.

- IF EMPTY: Place in trash or offer for recycling, if available.
- IF PARTLY FILLED: Call your local solid waste agency for disposal instructions. Never place unused product down any indoor or outdoor drain.

HOTLINE NUMBER:

Have the product container or label with you when calling a poison control center or doctor, or going for treatment. For emergency information or other questions call **1-800-801-0061**, Monday through Friday, 9 a.m to 5 p.m., Eastern time. After 5 p.m. call your poison control center.

WARRANTY:

To the extent consistent with applicable law, St. Gabriel Organics makes no other express or implied warranties, either of merchantability or fitness, for a particular use and shall not be liable for misuse or conditions beyond its control, such as handling or storage.

Milky Spore

Use Milky Spore to Kill Japanese Beetle Grubs

JAPANESE BEETLE / GRUB LIFE CYCLE



1,000 Adult Beetle lay 50,000 Grubs each year.

FOR MORE INFORMATION, GO TO

www.StGabrielOrganics.com OR CALL 1-800-801-0061

FREE BROCHURE:

**“Organizing a
Community Campaign
against the
Japanese Beetle.”**

MADE IN USA BY:

ST. GABRIEL ORGANICS

14044 Litchfield Dr.
Orange, VA 22960

BATCH CODE

